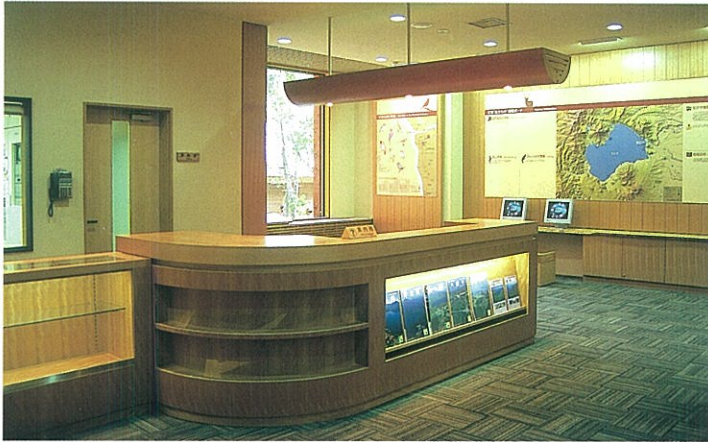


Information Corner



The Center provides an introduction to this national park, a map for the area around Lake Shikotsu and information on fishing, mountaineering, the Wild Bird Forest, the Nature Observation Club and more.

It is also possible to search for information on wild birds, plants, etc. using PCs available at the Center.

Lounge



You can make yourself at home while appreciating the landscape of Lake Shikotsu, reading, taking a rest, enjoying conversation, etc.

Lecture Room



The charm of Shikotsu, including its nature and history, is introduced through easy-to-understand images broadcast on a 150-inch large screen TV.

Natural Energy Utilization

The source of electricity at the Visitor Center is photovoltaic generation, which converts solar energy into electricity, enabling the use of various electrical devices within the facilities. Natural energy sources are therefore used, including geothermal temperature differences, which are employed for air conditioning purposes.



Outline of the building

Flat-roofed wooden and partially reinforced concrete building
Building area: 1,203 m² Total floor area: 998 m²

The Lake Shikotsu Visitor Center aims to introduce the nature of Lake Shikotsu in an easy-to-understand and interesting manner so that visitors to Lake Shikotsu can enjoy the splendid nature of the area. Why don't you embrace nature based on the knowledge and information available here at the Visitor Center? An encounter with dynamic nature awaits you. The area surrounding Lake Shikotsu abounds in facilities designed to help you get acquainted with nature, including nature observation trails and the Wild Bird Forest.

Area map



Access

■ Car	Chitose IC	Prefectural road	Approx. 25 km
	Sapporo City	National Route 453	Approx. 55 km
■ Bus	New Chitose Airport	Via Chitose City	Approx. 50 min.
	Sapporo City	National Route 453	Approx. 80 min.

Information on usage

- Opening hours: 9:30 – 17:30 (9:30 – 16:30 in winter)
- Closed: New Year holidays; Tuesdays in winter
- Admission: free of charge

Inquiries

Lake Shikotsu Visitor Center

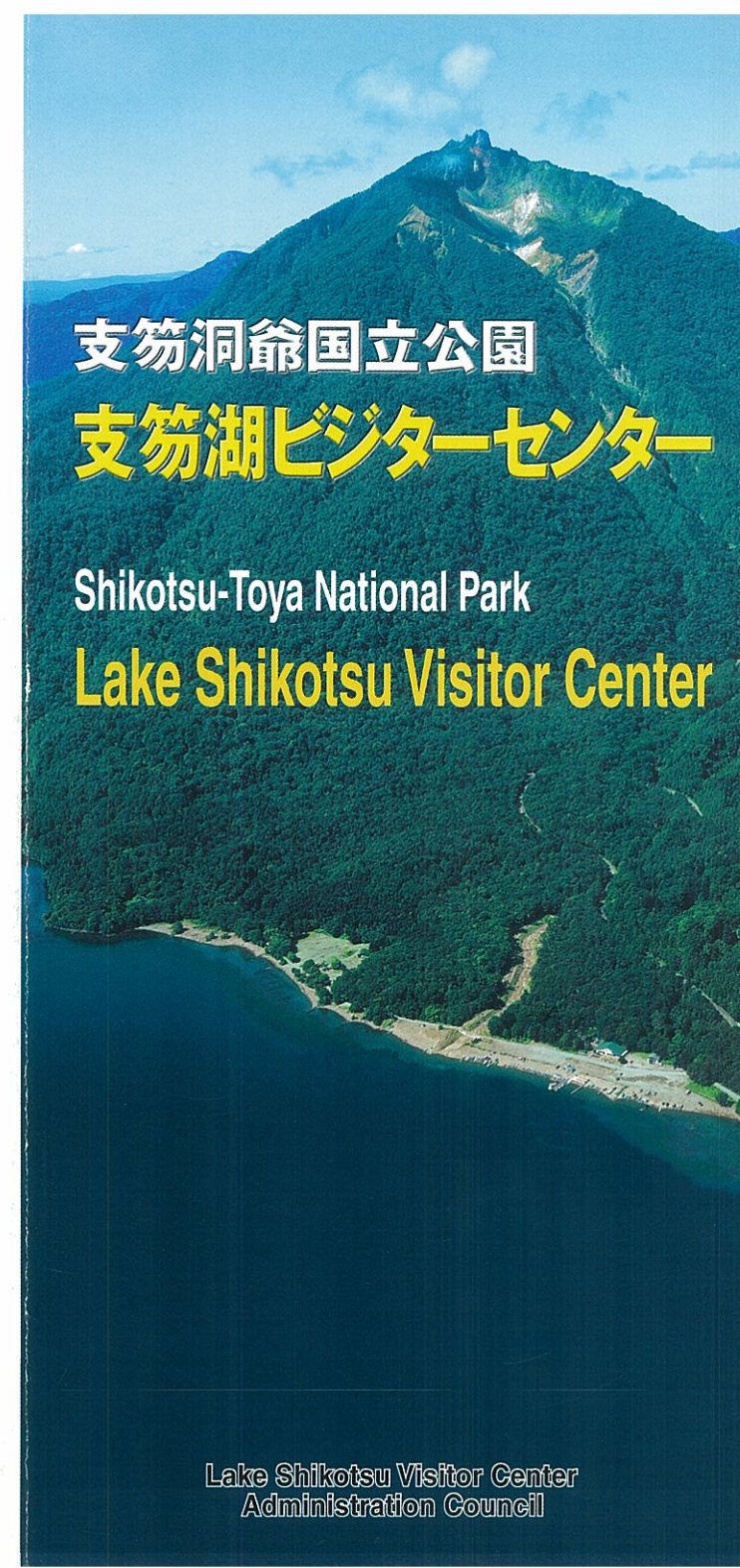
Shikotsuko Onsen, Chitose, Hokkaido 066-0281 Tel: 0123-25-2404

支笏洞爺国立公園

支笏湖ビジターセンター

Shikotsu-Toya National Park

Lake Shikotsu Visitor Center



Forest World



Landscape and environment of Shikotsu



Bird calls



Actual monarch birch display: 1.2 m in diameter

Mountain World

Tarumaesou
(*Pennellianthus frutescens*)

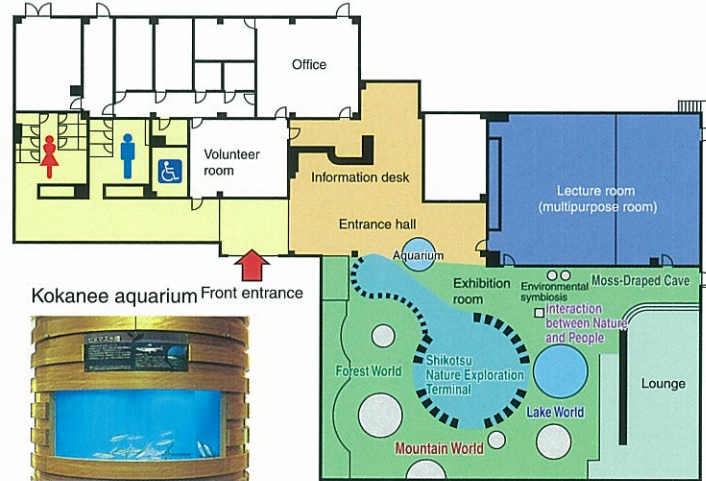


Plants that have adapted themselves to the harsh meteorological conditions of Mt. Tarumae

Information about the Center

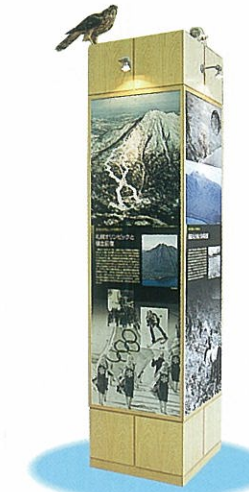
Mountains that are active even now adorned by beautiful alpine plants which allow us to breathe freely...A vast forest that keeps mankind at bay...Lake Shikotsu, which fascinates people with its mystic deep-blue color.

The nature of Shikotsu has a mysterious charm – a forest, lake, mountain, the ecology of living nature and more. Please enjoy the lively attraction of nature.



White-tailed sea eagle

Interaction between Nature and People

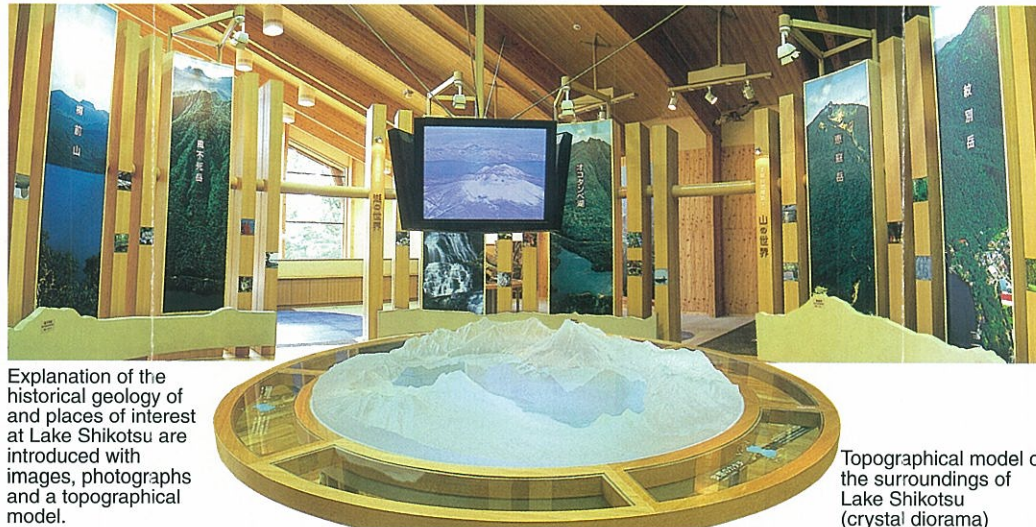


Moss-Draped Cave



Real-size (approx. 9 m) graphic

Shikotsu Nature Exploration Terminal



Explanation of the historical geology of and places of interest at Lake Shikotsu are introduced with images, photographs and a topographical model.

Topographical model of the surroundings of Lake Shikotsu (crystal diorama)

Lake World



Diorama of a tree at the bottom of the lake and underwater conditions