



Welcome to Daisetsuzan National Park ⑨

Designated in 1934 with an area of approximately 230,000 hectares, Daisetsuzan National Park is the largest national park in Japan. Three offices for park rangers are located here to preserve nature, animals and plants, as well as the magnificent landscapes of mountains and marshes.

Kamui Mintara ⑩

The Ainu, who have long lived in harmony with nature, called the Daisetsuzan Mountains "Kamui Mintara" (the garden where deities play). The Daisetsuzan Mountains, which harbor memories from ancient times, convey the majesty of nature.

Living Witnesses to the Glacial Epoch ⑪

In the glacial epoch, the sea level lowered, and Hokkaido was connected with the Asian Continent by land. Yellow butterflies (*Parnassius eversmanni*) and Asiatic pikas are said to have arrived in Hokkaido at that time and now live in the cold climate of the Daisetsuzan Mountains.

Patterned Ground ⑫

It took the cold weather of the Daisetsuzan Mountains and a great many years to make the strange stone patterns. You can also retrieve data on the permafrost (permanently frozen soil) seen around the top of the Daisetsuzan Mountain.

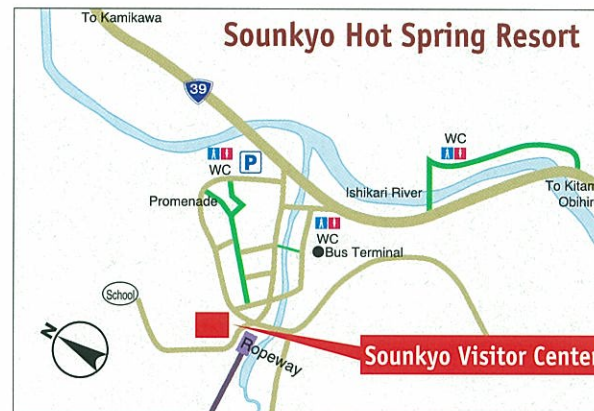
People and Animals ⑬

Nature is the mother of all creatures. All creatures are closely related to each other. Exhibits featuring stuffed animals and animal carvings include brown bears and Sika deer living amid the natural splendor of the Daisetsuzan Mountains, as well as Blakiston's fish owls and black woodpeckers designated as natural monuments.



Coexistence with the Natural Environment ⑭

This facility reduces the electrical consumption for lighting by using both a solar power generation system and commercial power supply as well as through natural lighting. Moreover, the "Promenade" at the Sounkyo Hot Spring Resort has snow-melting gutters which employ the waste water from nearby hot springs.



	Sapporo IC	Do-o Express way	Asahikawa Kita IC	National Highway Route 39	Sounkyo Hot Spring Resort
		1:30		1:00	
	Sapporo	JR Hakodate Main Line	Asahikawa	Bus 1:50	Sounkyo Hot Spring Resort
		1:20		Taxi 1:30	
	Sapporo	JR Hakodate Main Line	Asahikawa	JR Sekihoku Main Line	Bus 0:30
		1:20		Kamikawa	Taxi 0:20

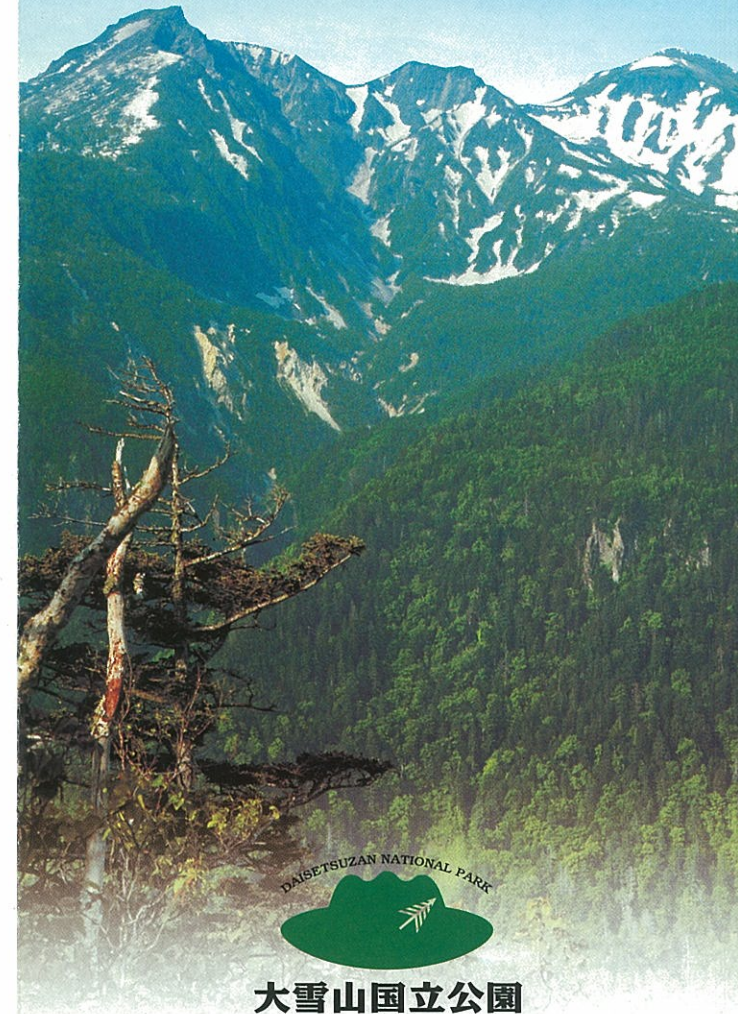
Information on the Center

Hours/ June~ September 8:00~ 18:00
 October~ May 9:00~ 17:00
 Closed/ Open every day (from July to September in Summer.)
 November~ May: Mondays
 (When Monday falls on a holiday, the following Tuesday.)
 December 31 to January 5

Sounkyo Visitor Center

Sounkyo, Kamikawa-cho, Kamikawa-gun, Hokkaido 078-1701, Japan
 Tel: 01658-9-4400 Fax: 01658-9-4401

Sounkyo Visitor Center



Ministry of the Environment

環境省



Brief description on explanation panels

Layout of explanation panels, counters and other furnishings
 ● Numbers are shown on the upper left-hand corner of each explanation panel.

Information Counter

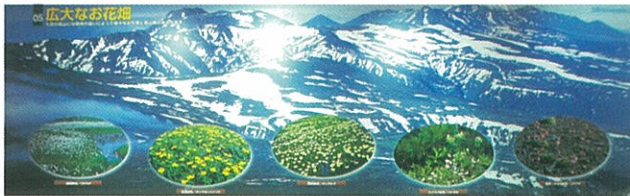
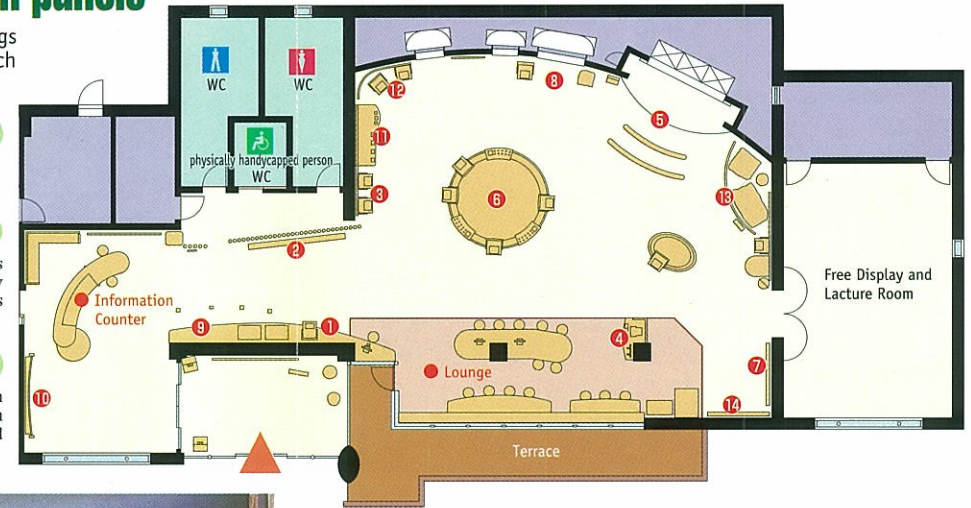
Receptionists at this counter offer the most current information. Feel free to ask questions.

Nature Observation Courses ①

Four courses, which provide opportunities to experience the natural beauty of places representative of Daisetsuzan National Park, are available to users of the park. Why not collect information on nature, including animals and plants season and things worth seeing, before going out to experience the natural beauty of the park?

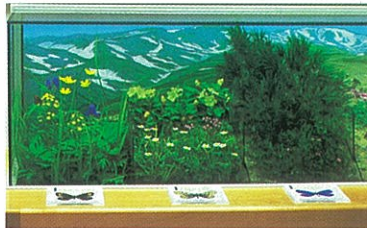
Guide to Mountain Climbing ②

To ensure safe and enjoyable mountain climbing, "mountain information notices provide guidance to people planning to climb in the Daisetsuzan Mountains. Information on dangerous areas and places where brown bears often appear are posted.



Vast Flower Gardens ③

The different environments of the Daisetsuzan Mountains contain diverse flower gardens and a variety of alpine butterfly species. Flower gardens, plants and butterflies which grow in colonies in bogs, snowmelt marshes, snow-beds, creeping pines, windblown trees and gravel beds are displayed.



Geological Dioramas of Daisetsuzan National Park ⑥

Daisetsuzan National Park, including its climbing paths, major roads and a snow-covered valley in early July, are expressed using topographic models of important natural features. You can locate the major mountains of the Daisetsuzan, shelters, campsites, hot springs, nature facilities and other scenic spots by pressing a switch.



High-Definition TV Videos ⑤

Daisetsuzan Mountains and Soukyo Gorge

- The four seasons of the Daisetsuzan Mountain: winter, spring, summer and autumn
- Secrets of Soukyo Gorge

Push the start button to see beautiful high-definition TV videos.



Changes in Forests ⑦

Forests in the Daisetsuzan Mountains are protected by the power of nature and people's efforts. Exhibits on the wind damage caused by the Toyamaru Typhoon in 1954 and forests restored by removing trees felled by the wind and planting are displayed.



Columnar Joint ⑧

When one of the volcanoes in the Daisetsuzan Mountains erupted from the central crater (Ohachidaira) approximately 30,000 years ago, large quantities of pumice and volcanic ash buried the Ishikari River basin. As the sediment cooled, regular chasms (columnar joints) formed in it, which were eroded by the swift currents of the Ishikari River to create the present valley.



Free Display and Lecture Room

In this room, photo exhibitions and other exhibitions with themes are displayed, and the results of study and research are presented. Handicraft classes, slide & talk shows and video theaters are also planned.

Lounge

This corner provides opportunities to talk about the nature, including animals and plants, while sitting around a table. The outdoor terrace commands a fine view of Soukyo Gorge. You can also retrieve information on nature and how to enjoy it through the "All of the Daisetsuzan Mountain" database.

Video Library ④

You can watch a video on the Daisetsuzan Mountains on the monitor. Feel free to ask our staff member about it.