

Natural Craft



Try making objects using **leaves** and **pebbles** that are near at hand. Why not enjoy easy, rustic and interesting craftwork?



See, touch and comprehend the nature of areas by Lake Toya. You will explore nature along with a guide while smelling the odor of the trees and earth.

Nature Hike



Cooking



How do you make **soba** and **udon** noodles? Is it true that you can make dumplings with potatoes? Check it out! (Reservations required)



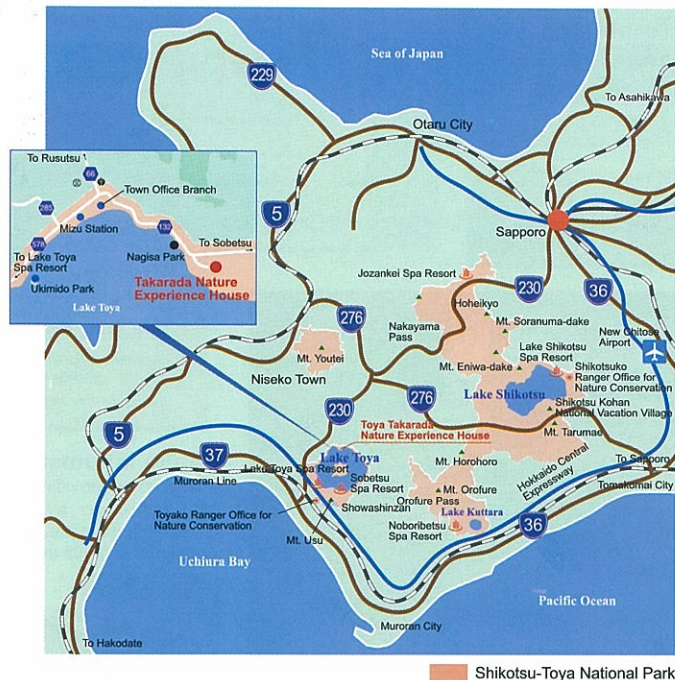
Biotope

Biotope refers to an area where a wide variety of indigenous wild animal life and plant life live together. We have restored a waterfront environment in Satoyama (rural forests) as a place for nature observation.



Shikotsu-Toya National Park

National park with a total area of 99,473 ha with two major caldera lakes (Lake Shikotsu and Lake Toya), characteristic volcanoes (Mt. Youtei, Mt. Usu and Mt. Tarumae) and many hot springs (designated in 1949)



Access



Car

Approx. 2 hr. from Sapporo (about 100 km)
Approx. 1 hr. from Muroran (about 50 km)
Approx. 2 hr. 40 min. from Hakodate (about 130 km)
Approx. 20 min. from Lake Toya Spa Resort



Bus

2 hr. 20 min. from Sapporo (bound for Lake Toya Spa Resort)
Get off at the "Toya-Mizu Station" Bus Stop and walk 15 min.

Information on the opening of the House

- Hours: 9:00 a.m. – 5:00 p.m.
- Closed: Mon. (When Mon. falls on a national holiday, it is closed on the next day), year-end and New Year holidays
- Free admission

Shikotsu-Toya National Park Toya Takarada Nature Experience House

3, Takarada, Toyako-cho, Abuta-gun

Tel. & Fax.: 0142-82-5999

E-mail: takarada@violin.ocn.ne.jp

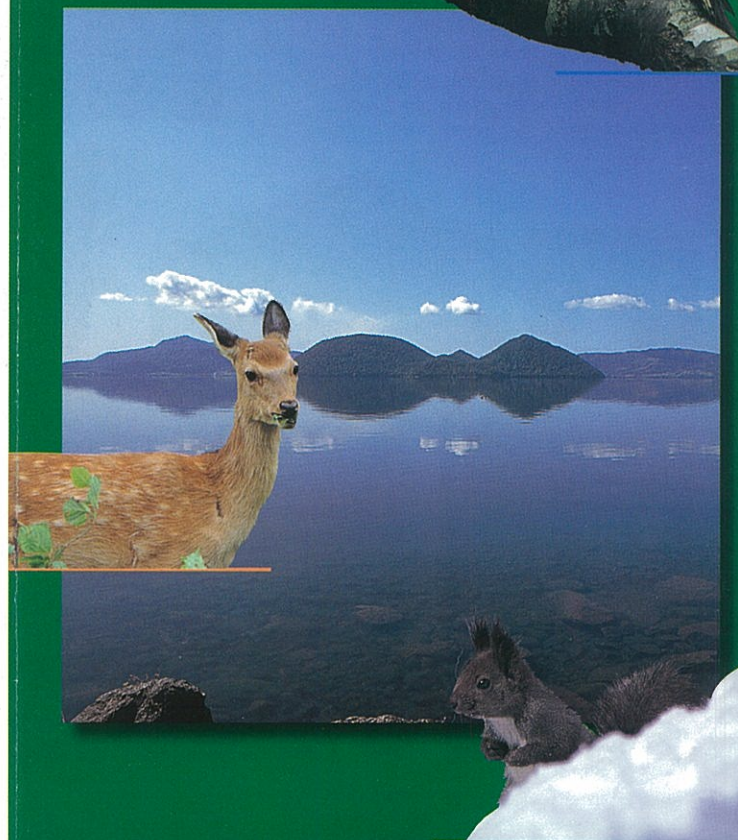
http://www18.ocn.ne.jp/~toya/



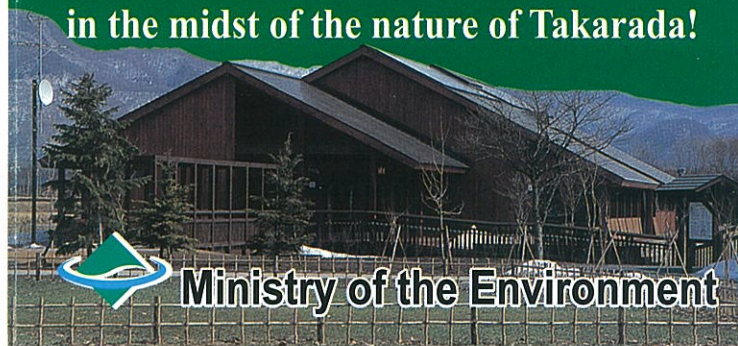
Printed on 100% recycled paper

Shikotsu-Toya National Park

Toya Takarada Nature Experience House



Let's experience Lake Toya
in the midst of the nature of Takarada!



Ministry of the Environment



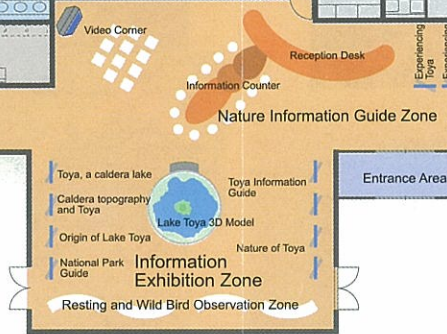
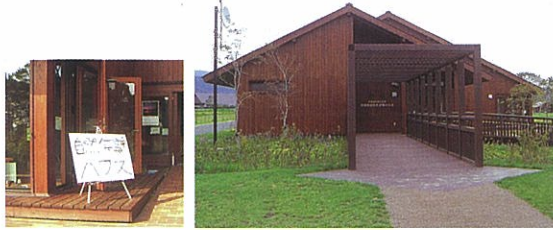
Plenty of information for visitors to have more fun around Lake Toya, ranging from wild birds you can watch now to the origin of the lake

Takarada Nature Experience House is a hub facility for experiencing the nature around Lake Toya. While providing information and knowledge useful for getting in touch with nature, the House serves as a place to engage in experience-based activities.



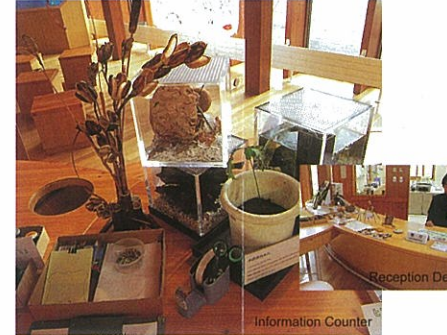
Entrance Area ↓

Programs available at Takarada Nature Experience House and nature information are introduced at the Entrance Area.

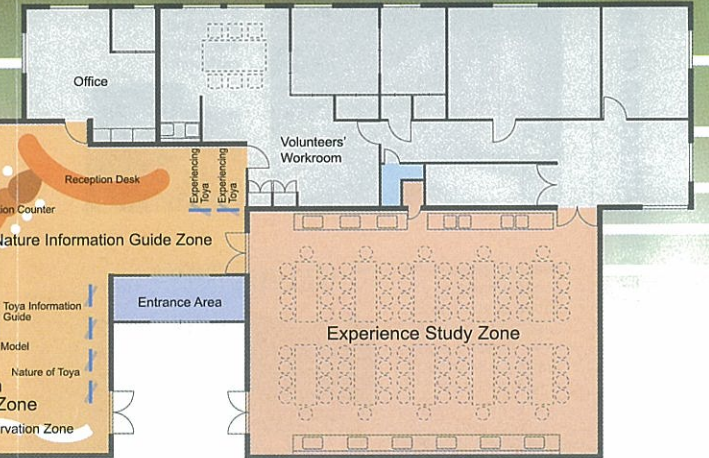


Nature Information Guide Zone ↓

In addition to providing seasonal information on wild birds and flowers, a guide answers questions concerning the nature of Lake Toya and questions visitors have about their experiences around the lake.



Toya Takarada Nature Experience House

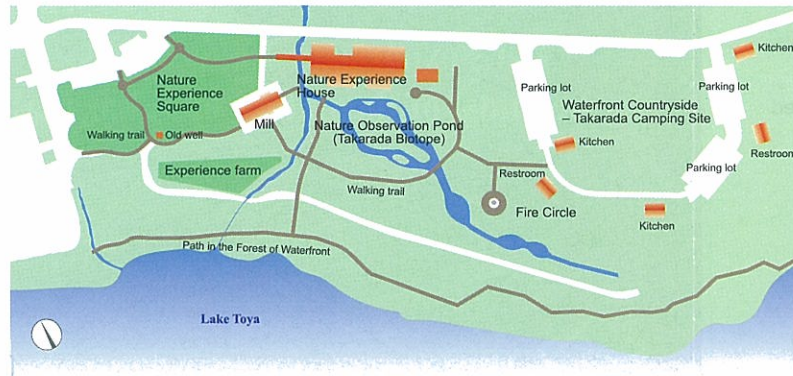


Experience Study Zone ↑

Experience programs, such as a buckwheat noodle making class and a craft experience course, are practiced in this zone.

← Information Exhibition Zone ↑

The 3D model of Lake Toya introduces places of interest and walking routes. The origin and organisms of Lake Toya are also explained using exhibition panels.



Waterfront Countryside – Takarada Camping Site



The camping site adjoining Takarada Nature Experience House has cottages and a site available for auto-camping. Walking on the Path in the Forest of Waterfront, which encircles the camping site, you can enjoy observing nature.

Outline

- Opening period: April 23 – October 31
- Hours: Checkin: 1:00 – 6:00 p.m. (camping); 2:00 – 6:00 p.m. (cabin)
- Checkout: 8:00 a.m. – 8:00 p.m. on the following day
- Admission fees: Adults: 700 yen; children (elementary school students): 300 yen
- For more information about the use of the camping site, call: 0142-82-5777.

Mill



Buckwheat harvested at Takarada Nature Experience House is also ground at the mill. With earthen floors and an open hearth room you can enjoy a feeling of how farmers used to live in the past.

Outline

- Closed: Mon. (When Mon. falls on a national holiday, it is closed on the next day), year-end and New Year holidays
- Free admission (Reservations required)

