

Shikotsu-Toya National Park – Toyako Area

Shikotsu-Toya National Park is a national park designated in 1949 and located amidst the natural splendor centering on Lake Toya, Mt. Yotei, Noboribetsu, Lake Shikotsu and Jozankei. The Toyako Area is characterized by a rough yet familiar, varied nature, which unfolds in the surroundings of Lake Toya, which is well known as Japan's northernmost ice-free lake along with Lake Shikotsu, and Mt. Usu, which still continues rigorous volcanic activities.

Toyako Visitor Center

The Ministry of the Environment has established visitor centers in the 28 national parks across the nation with the aim of providing information on the nature and use of national parks. The Toyako Visitor Center is an exhibition and information supply facility where visitors can get acquainted with the natural environment of Lake Toya through an exhibition and explanations concerning the surrounding natural environment and flora and fauna therein.

[Lecture Room] 1F

The nature of the Toyako Area throughout the year is introduced using a 150-inch high-definition television.



[View Corner] 2F

You can see the Konpira Crater-Remnants of the Disaster which were created by the 2000 eruption.



[Books Corner] 2F

You can check nature information on surrounding areas while enjoying the view of Lake Toya.

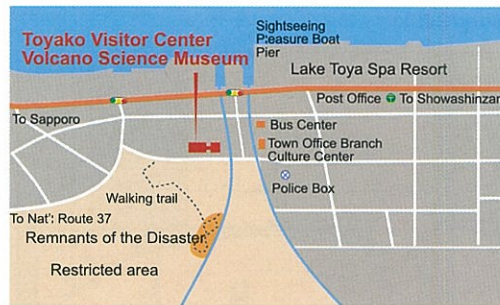
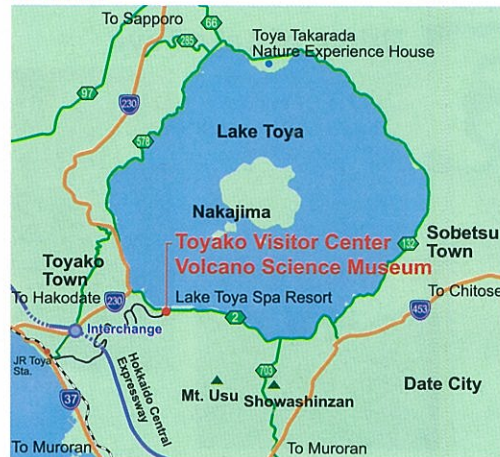


[Information Corner] 2F

Using a PC, you can closely study nature information on the Toyako Area with a 3D screen and audio.



Area Map



Access

JR / Bus

Sapporo Shinchitose Sta. Approx. 5 km; approx. 18 min. by bus 2 min. walk

Sapporo JR Muroran Line (approx. 1 hr. 40 min. by limited express train) Toya Sta. Lake Toya Spa Resort Bus Terminal 2 min. walk

Sapporo Express bus: approx. 2 hr. 40 min. to Lake Toya Spa Resort Bus Terminal 2 min. walk

Car

Sapporo Approx. 103 km; approx. 2 hr. via Jozankei, Nakayama Pass and Rusutsu Kogen

New Chitose Airport Via Lake Shikotsu and Bifue Pass (approx. 90 km; approx. 1 hr. 40 min.)

Express bus: Chitose I.C. – Abuta-Toyako I.C. (approx. 110 km; approx. 1 hr. 20 min.)

Toyako Visitor Center

Volcano Science Museum

Toyako Visitor Center

Facility Guide

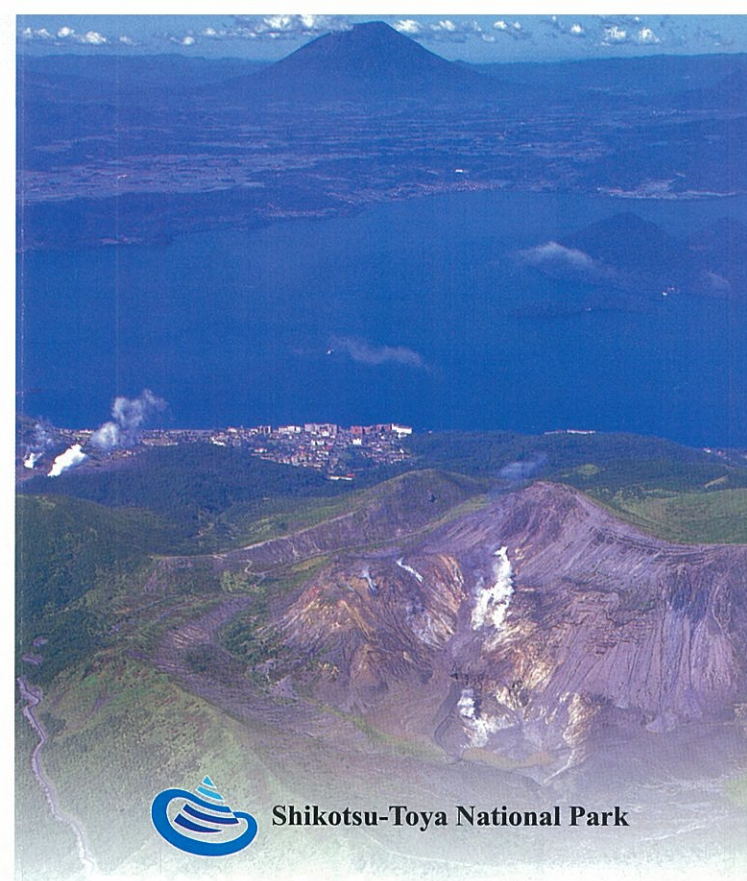
Hours: 9:00 a.m. – 5:00 p.m. Closed: Dec. 31 – Jan. 1
142-5, Toyako Onsen, Toyako-cho, Abuta-gun, Hokkaido
Tel: 0142-75-2555

URL: <http://www.toyako-vc.jp>

Free admission (Volcano Science Museum requires admission fees.)

Free parking (capacity: 29 passenger vehicles and 12 buses)

* A tour guide will be available upon request.



Shikotsu-Toya National Park

Toyako Visitor Center



Hokkaido Regional Environment Office

Ministry of the Environment



Field Information

Guidance on how to enjoy the fields by Lake Toya and an introduction of national parks across the nation are given.



Reception



Field manner panels



Origin of Lake Toya

The characteristics of Lake Toya, a caldera lake, and Mt. Usu, a still active volcano, are introduced through the history and mechanism of eruptions.



What-Is-This Table



Graphic Tower

Introduction of Lake Toya

Aerial photos of Lake Toya spread across the floor. Above them stand posts describing Lake Toya's observation points and thus introducing the area.



Posts for observation points

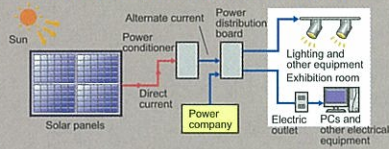


1/1,200 aerial photograph

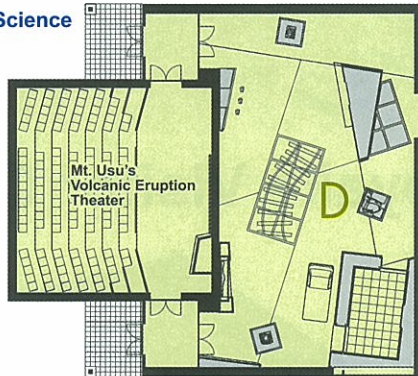
Utilization of natural energy sources

The facility has adopted a photovoltaic power generation system and a ground source heat recovery system in consideration of the needs to save energy and protect the environment.

Photovoltaic power generation system



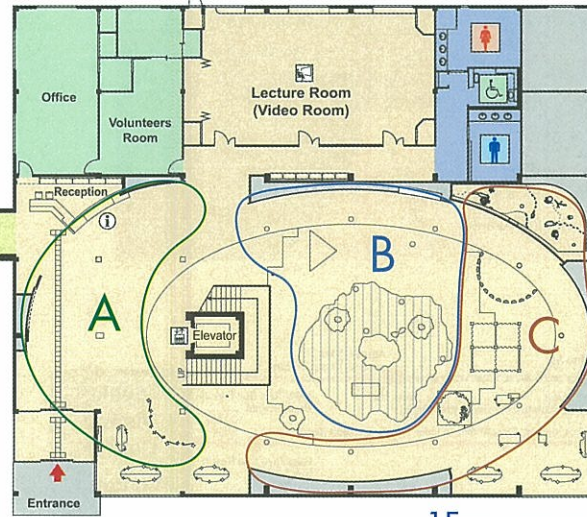
Volcano Science Museum



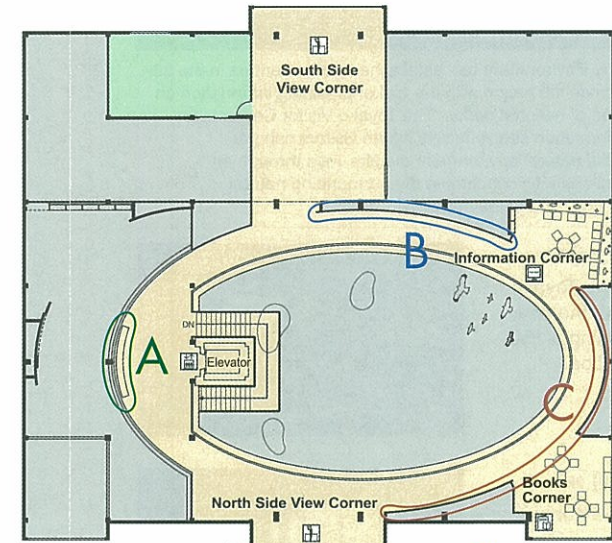
Total floor area: 492.08 m²



Toyako Visitor Center



1F total floor area: 1,005.35 m²

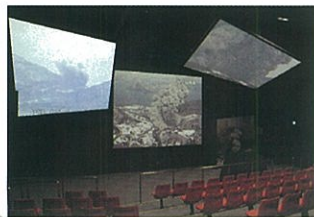


2F total floor area: 465.98 m²



Volcano Science Museum

The Volcano Science Museum, connected with the Toyako Visitor Center via the skywalk, introduces the volcanic activities of Mt. Usu, which erupts every 20 to 50 years.



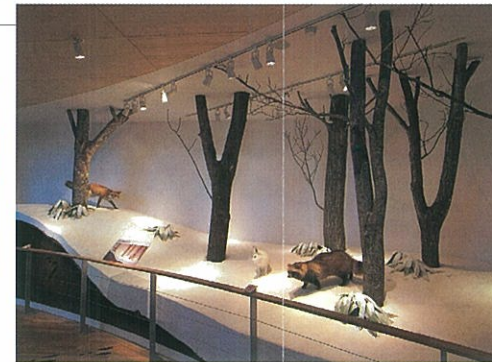
3D Multi-Vision Theater



Real specimen of tree stems

Nature in and around Lake Toya

Characteristics and relations of flora and fauna around Lake Toya are introduced, using beautiful photos and real specimens.



Diorama (living beings in winter)



Diorama (underground activities)