

支笏湖集団施設地区現況図等

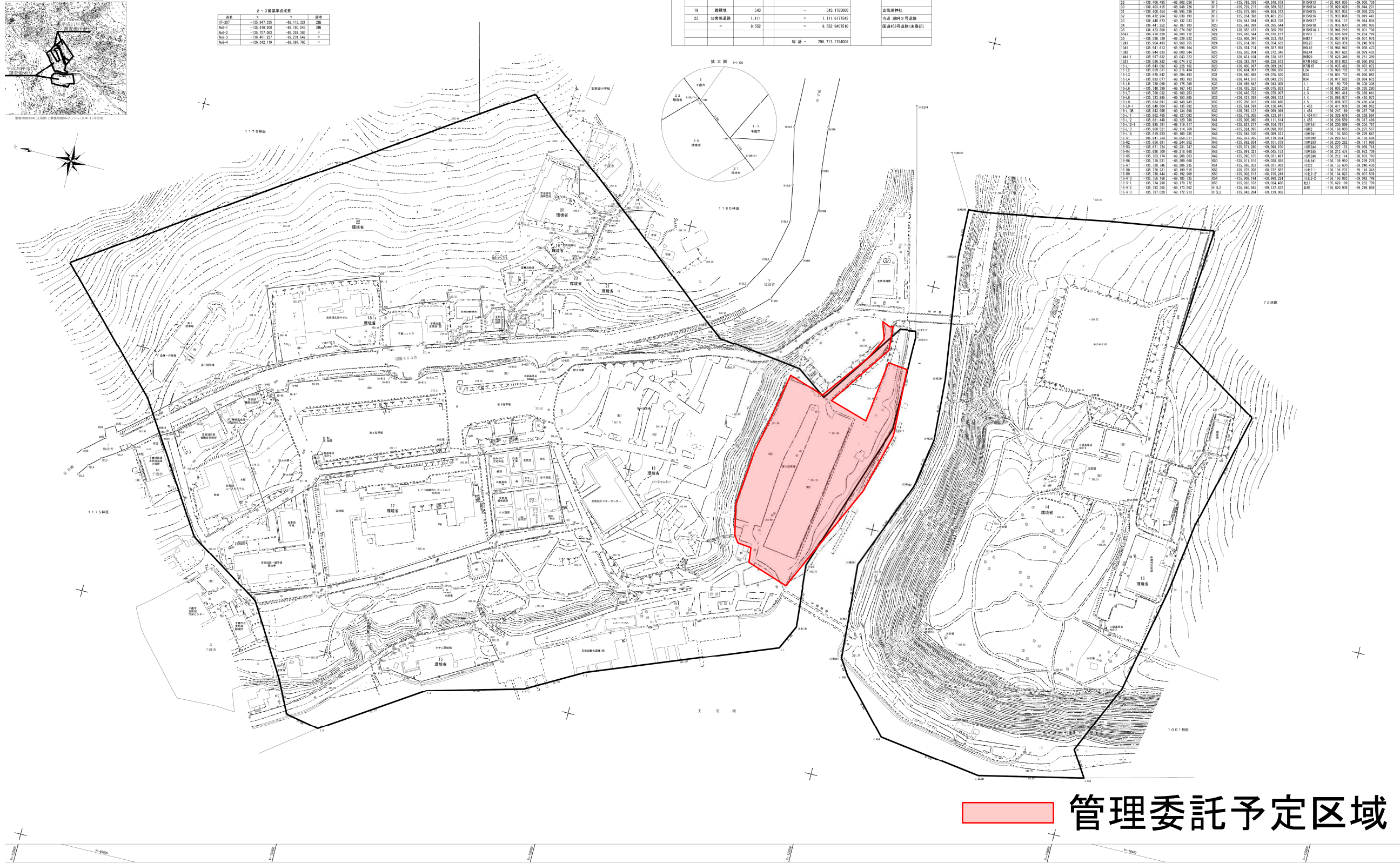
別図1



点名	X	Y	備考
H7-207	-135,847,335	-89,110,321	2階
H8p-1	-135,810,592	-89,100,542	2階
H8p-2	-135,797,583	-89,231,361	
H8p-3	-135,841,277	-89,231,642	
H8p-4	-135,86,110	-89,097,795	

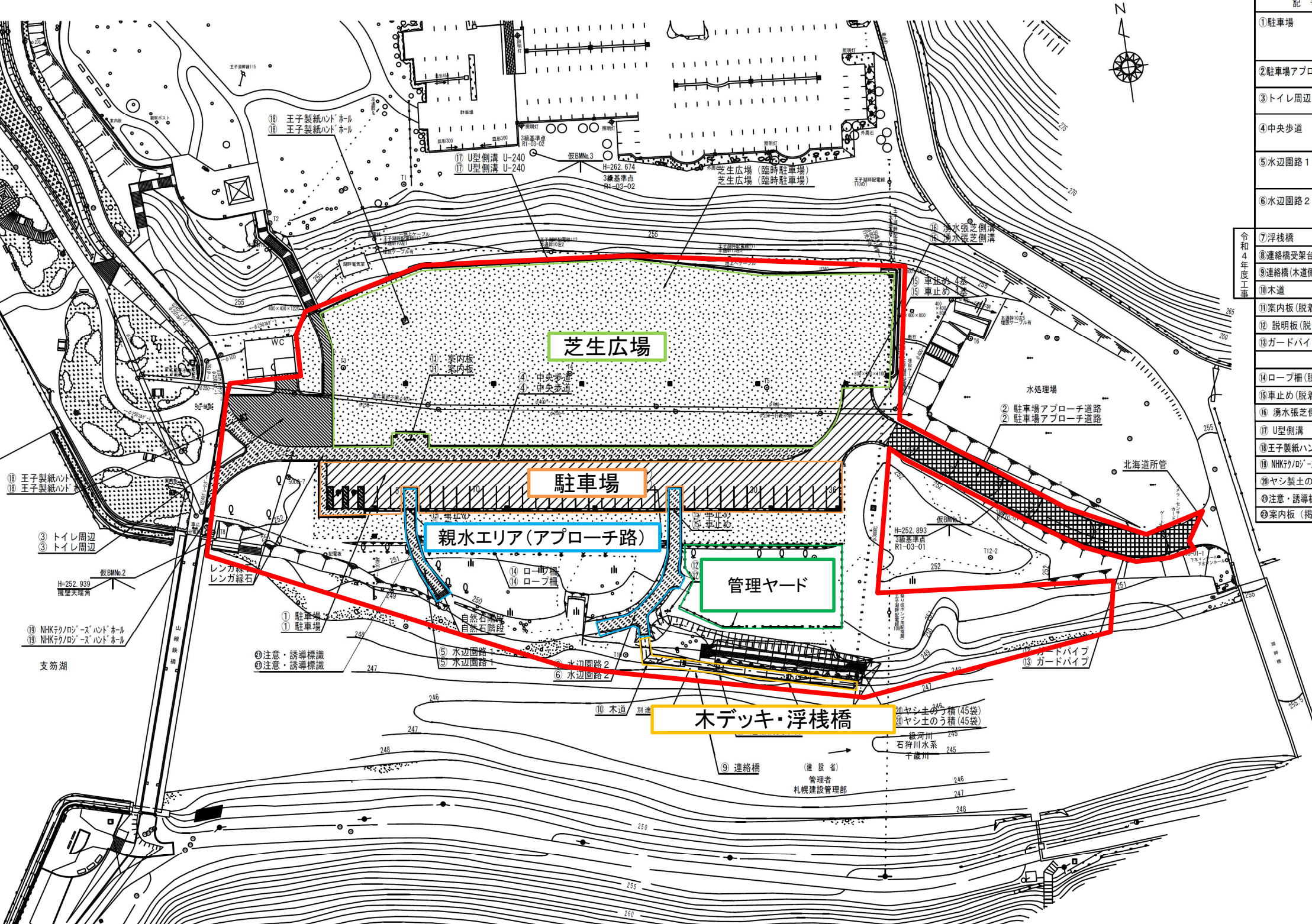
19	雑種地	542	=	542,176590	支笏湖村
23	公共用道路	1,111	=	1,111,617545	市道 支笏2号道路
		9,552	=	9,552,940750	国道45号道路(未登記)
総計 = 295,717,179405					

H7-207	-135,847,335	-89,110,321	H15	-135,788,039	-89,568,070	H19R13	-135,844,001	-89,002,721
H8p-1	-135,810,592	-89,100,542	H16	-135,779,273	-89,569,521	H19R14	-135,829,039	-89,044,201
H8p-2	-135,797,583	-89,231,361	H17	-135,875,866	-89,404,272	H19R15	-135,811,052	-89,038,235
H8p-3	-135,841,277	-89,231,642	H18	-135,876,399	-89,401,256	H19R16	-135,833,006	-89,019,441
H8p-4	-135,86,110	-89,097,795	H19	-135,841,094	-89,403,728	H19R17	-135,814,107	-89,016,854
			H20	-135,841,092	-89,187,013	H20R1	-135,825,070	-89,010,885
			H21	-135,835,157	-89,265,795	H20R10-1	-135,846,219	-89,001,798
			H22	-135,806,391	-89,253,782	H20R11	-135,825,294	-89,054,799
			H23	-135,810,594	-89,253,215	H20R12	-135,825,294	-89,054,799
			H24	-135,810,594	-89,253,215	H20R13	-135,825,294	-89,054,799
			H25	-135,824,774	-89,257,959	H20R14	-135,845,942	-89,068,473
			H26	-135,824,774	-89,257,959	H20R15	-135,845,942	-89,068,473
			H27	-135,824,774	-89,257,959	H20R16	-135,845,942	-89,068,473
			H28	-135,824,774	-89,257,959	H20R17	-135,845,942	-89,068,473
			H29	-135,824,774	-89,257,959	H20R18	-135,845,942	-89,068,473
			H30	-135,824,774	-89,257,959	H20R19	-135,845,942	-89,068,473
			H31	-135,824,774	-89,257,959	H20R20	-135,845,942	-89,068,473
			H32	-135,824,774	-89,257,959	H20R21	-135,845,942	-89,068,473
			H33	-135,824,774	-89,257,959	H20R22	-135,845,942	-89,068,473
			H34	-135,824,774	-89,257,959	H20R23	-135,845,942	-89,068,473
			H35	-135,824,774	-89,257,959	H20R24	-135,845,942	-89,068,473
			H36	-135,824,774	-89,257,959	H20R25	-135,845,942	-89,068,473
			H37	-135,824,774	-89,257,959	H20R26	-135,845,942	-89,068,473
			H38	-135,824,774	-89,257,959	H20R27	-135,845,942	-89,068,473
			H39	-135,824,774	-89,257,959	H20R28	-135,845,942	-89,068,473
			H40	-135,824,774	-89,257,959	H20R29	-135,845,942	-89,068,473
			H41	-135,824,774	-89,257,959	H20R30	-135,845,942	-89,068,473
			H42	-135,824,774	-89,257,959	H20R31	-135,845,942	-89,068,473
			H43	-135,824,774	-89,257,959	H20R32	-135,845,942	-89,068,473
			H44	-135,824,774	-89,257,959	H20R33	-135,845,942	-89,068,473
			H45	-135,824,774	-89,257,959	H20R34	-135,845,942	-89,068,473
			H46	-135,824,774	-89,257,959	H20R35	-135,845,942	-89,068,473
			H47	-135,824,774	-89,257,959	H20R36	-135,845,942	-89,068,473
			H48	-135,824,774	-89,257,959	H20R37	-135,845,942	-89,068,473
			H49	-135,824,774	-89,257,959	H20R38	-135,845,942	-89,068,473
			H50	-135,824,774	-89,257,959	H20R39	-135,845,942	-89,068,473
			H51	-135,824,774	-89,257,959	H20R40	-135,845,942	-89,068,473
			H52	-135,824,774	-89,257,959	H20R41	-135,845,942	-89,068,473
			H53	-135,824,774	-89,257,959	H20R42	-135,845,942	-89,068,473
			H54	-135,824,774	-89,257,959	H20R43	-135,845,942	-89,068,473
			H55	-135,824,774	-89,257,959	H20R44	-135,845,942	-89,068,473
			H56	-135,824,774	-89,257,959	H20R45	-135,845,942	-89,068,473
			H57	-135,824,774	-89,257,959	H20R46	-135,845,942	-89,068,473
			H58	-135,824,774	-89,257,959	H20R47	-135,845,942	-89,068,473
			H59	-135,824,774	-89,257,959	H20R48	-135,845,942	-89,068,473
			H60	-135,824,774	-89,257,959	H20R49	-135,845,942	-89,068,473
			H61	-135,824,774	-89,257,959	H20R50	-135,845,942	-89,068,473
			H62	-135,824,774	-89,257,959	H20R51	-135,845,942	-89,068,473
			H63	-135,824,774	-89,257,959	H20R52	-135,845,942	-89,068,473
			H64	-135,824,774	-89,257,959	H20R53	-135,845,942	-89,068,473
			H65	-135,824,774	-89,257,959	H20R54	-135,845,942	-89,068,473
			H66	-135,824,774	-89,257,959	H20R55	-135,845,942	-89,068,473
			H67	-135,824,774	-89,257,959	H20R56	-135,845,942	-89,068,473
			H68	-135,824,774	-89,257,959	H20R57	-135,845,942	-89,068,473
			H69	-135,824,774	-89,257,959	H20R58	-135,845,942	-89,068,473
			H70	-135,824,774	-89,257,959	H20R59	-135,845,942	-89,068,473
			H71	-135,824,774	-89,257,959	H20R60	-135,845,942	-89,068,473
			H72	-135,824,774	-89,257,959	H20R61	-135,845,942	-89,068,473
			H73	-135,824,774	-89,257,959	H20R62	-135,845,942	-89,068,473
			H74	-135,824,774	-89,257,959	H20R63	-135,845,942	-89,068,473
			H75	-135,824,774	-89,257,959	H20R64	-135,845,942	-89,068,473
			H76	-135,824,774	-89,257,959	H20R65	-135,845,942	-89,068,473
			H77	-135,824,774	-89,257,959	H20R66	-135,845,942	-89,068,473
			H78	-135,824,774	-89,257,959	H20R67	-135,845,942	-89,068,473
			H79	-135,824,774	-89,257,959	H20R68	-135,845,942	-89,068,473
			H80	-135,824,774	-89,257,959	H20R69	-135,845,942	-89,068,473
			H81	-135,824,774	-89,257,959	H20R70	-135,845,942	-89,068,473
			H82	-135,824,774	-89,257,959	H20R71	-135,845,942	-89,068,473
			H83	-135,824,774	-89,257,959	H20R72	-135,845,942	-89,068,473
			H84	-135,824,774	-89,257,959	H20R73	-135,845,942	-89,068,473
			H85	-135,824,774	-89,257,959	H20R74	-135,845,942	-89,068,473
			H86	-135,824,774	-89,257,959	H20R75	-135,845,942	-89,068,473
			H87	-135,824,774	-89,257,959	H20R76	-135,845,942	-89,068,473
			H88	-135,824,774	-89,257,959	H20R77	-135,845,942	-89,068,473
			H89	-135,824,774	-89,257,959	H20R78	-135,845,942	-89,068,473
			H90	-135,824,774	-89,257,959	H20R79	-135,845,942	-89,068,473
			H91	-135,824,774	-89,257,959	H20R80	-135,845,942	-89,068,473
			H92	-135,824,774	-89,257,959	H20R81	-135,845,942	-89,068,473
			H93	-135,824,774	-89,257,959	H20R82	-135,845,942	-89,068,473
			H94	-135,824,774	-89,257,959	H20R83	-135,845,942	-89,068,473
			H95	-135,824,774	-89,257,959	H20R84	-135,845,942	-89,068,473
			H96	-135,824,774	-89,257,959	H20R85	-135,845,942	-89,068,473
			H97	-135,824,774	-89,257,959	H20R86	-135,845,942	-89,068,473
			H98	-135,824,774	-89,257,959	H20R87	-135,845,942	-89,068,473
			H99	-135,824,774	-89,257,959	H20R88	-135,845,942	-89,068,473
			H100	-135,824,774	-89,257,959	H20R89	-135,845,942	-89,068,473
			H101	-135,824,774	-89,257,959	H20R90	-135,845,942	-89,068,473
			H102	-135,824,774	-89,257,959	H20R91	-135,845,942	-89,068,473
			H103	-135,824,774	-89,257,959	H20R92	-135,845,942	-89,068,473
			H104	-135,824,774	-89,257,959	H20R93	-135,845,942	-89,068,473
			H105	-135,824,774	-89,257,959	H20R94	-135,845,942	-89,068,473
			H106	-135,824,774	-89,257,959	H20R95	-135,845,942	-89,068,473
			H107	-135,824,774	-89,257,959	H20R96	-135,845,942	-89,068,473
			H108	-135,824,774	-89,257,959	H20R97	-135,845,942	-89,068,473
			H109	-135,824,774	-89,257,959	H20R98	-135,845,942	-89,068,473
			H110	-135,824,774	-89,257,959	H20R99	-135,845,942	-89,068,473
			H111	-135,824,774	-89,257,959	H20R100	-135,845,942	-89,068,473



管理委託予定区域

支笏湖園地(第5駐車場エリア)主要施設配置図



施設一覧

記号	名称・規格	数量
①駐車場	車道アスファルト舗装 t=800 一般 W=3.00×L=5.00~34台 障がい者用専用駐車場 W=3.50×L=5.00~2台 計36台	1425.81m ²
②駐車場アプローチ道路	車道再生細粒度アスファルト t=30 L=81.50m	402.15m ²
③トイレ周辺	景観舗装 無色(歩道 t=300) 脱色アスファルト舗装	299.56m ²
④中央歩道	W=3.00m 景観舗装 クリーム (歩道 t=300) 脱色アスファルト舗装	景観舗装 クリーム 計 688.81m ²
⑤水辺园路1	W=2.00m 景観舗装 クリーム (歩道 t=300) 脱色アスファルト舗装	20.63m
⑥水辺园路2	W=2.50m 景観舗装 クリーム (歩道 t=300) 脱色アスファルト舗装	36.34m
⑦浮棧橋	W=2.00m フェンス付き 係留部材含む	30.00m
⑧連絡橋受架台(浮棧橋側)	W=2.00m フェンス付き 係留部材含む	2.00m
⑨連絡橋(木道側受架台含む)	W=1.21m×L=7.21	1基
⑩木道	W=2.00m	13.06m
⑪案内板(脱着式)	表示サイズ 1.8m×0.9m ユニボイス作成	1基
⑫説明板(脱着式)	表示サイズ 1.9m×0.9m ユニボイス作成	1基
⑬ガードパイプ	景観型 GP-B3-2E3 (上記のうち)R加工延長 (基礎25基)	48.00m 9.23m
⑭ロープ柵(脱着式)	H=0.60 1段 (基礎92基)	156.96m
⑮車止め(脱着式)	ブラ擬木 φ120	6基
⑯湧水張芝側溝	W=1.100m×L=28.88m	28.88m
⑰U型側溝	U-240 (既設同位置敷設)	132.15m
⑱王子製紙ハンドホール	1200×1200×H1200	2基
⑲NHKカボソーズハンドホール	600×600×H600(国土交通省仕様H1-6)	1基
⑳ヤシ製のう	600×400	45袋
㉑注意・誘導板(固定式)	表示サイズ0.90m×0.90m	1基
㉒案内板(掲示板付)	表示サイズ1.8m×0.90m	1基

令和4年度工事