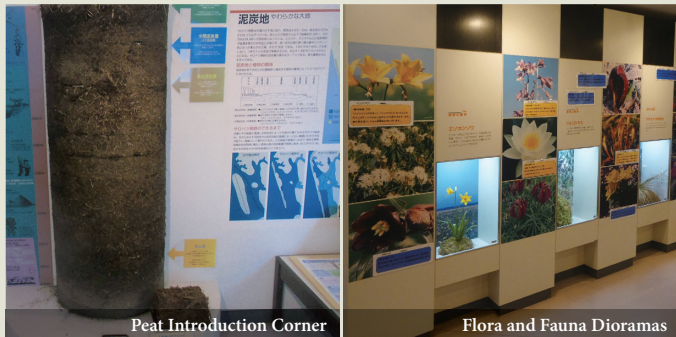
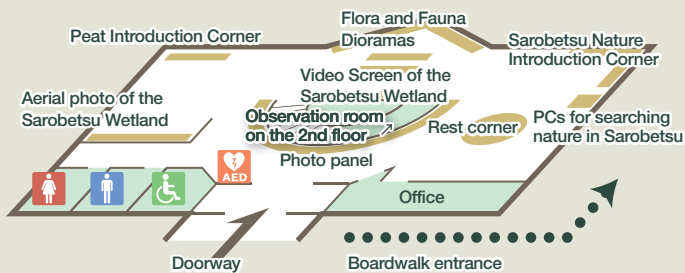


Horonobe Visitor Center

Horonobe Visitor Center illustrates through videos and exhibits how the Sarobetsu Wetland has formed over many years, as well as the ecology of the diverse flora and fauna that thrive there. Before strolling in the wilderness, you will learn more about the Sarobetsu Plain and feel closer to small plants, flowers, and animals that live and breathe there. In addition, you can enjoy a panoramic view of the magnificent Mt. Rishiri and marshes that spread toward the horizon from the observation room on the second floor.

Floor map of the 1st floor 2nd floor: Observation room



Peat Introduction Corner

Flora and Fauna Dioramas



Observation room on the 2nd floor

Access



[Location] Aza Shimonuma, Horonobe-cho,
Teshio-gun, Hokkaido

- By car: Route 40 - Prefectural Road Route 972
- By JR: Get off at Shimonuma Station and walk about 30 minutes

Facility Information

Admission free	Open hours: 9 a.m. to 5 p.m. Open from May to October
Contact	Horonobe Visitor Center Tel: 01632-5-2077 Planning & Policy Division, Horonobe Town Hall Tel: 01632-5-1114 Wakkanai Ranger Office, Ministry of the Environment Tel: 0162-33-1100

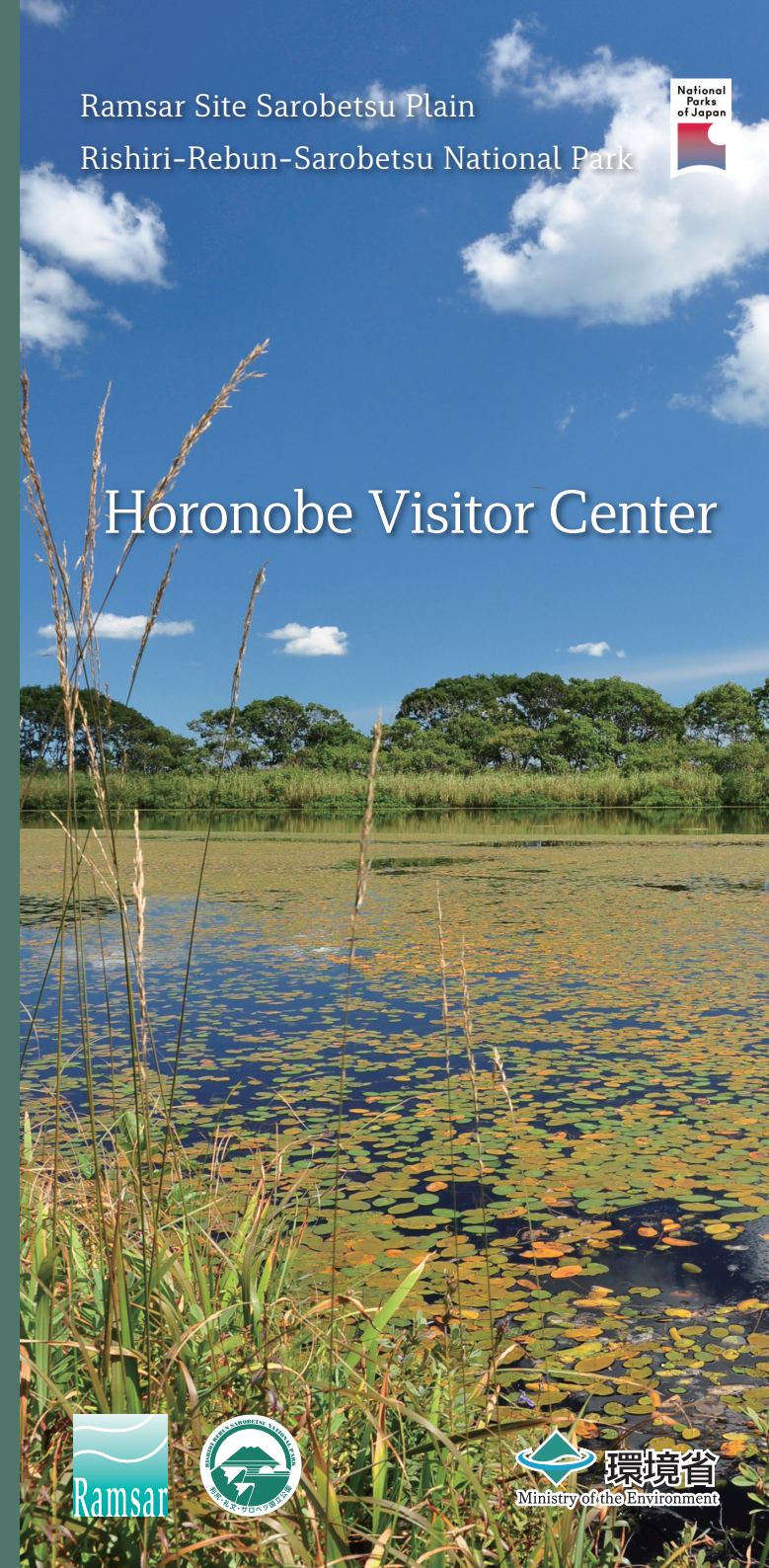


2023.3

Ramsar Site Sarobetsu Plain
Rishiri-Rebun-Sarobetsu National Park



Horonobe Visitor Center





May



June



Marsh plants you encounter in the Sarobetsu Wetland



July



August

Boardwalk Map

Shimo-sarobetsu Nature Observation Trail

There is a wooden boardwalk of about 1 km from Horonobe Visitor Center to Naganuma. You can observe the flowers and wild birds of the Sarobetsu Wetland, and sometimes encounter rare creatures such as Viviparous lizards there.

There is also a deck from which you can observe *Yachimanako* (deep holes scattered throughout the wetland) up close to find out how deep they are.

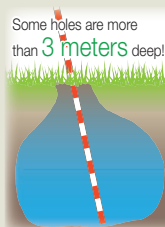
Rules for walking the boardwalk

- Do not get off the boardwalk**
It is dangerous to leave the boardwalk because there are deep holes lurking called *Yachimanako* everywhere.
- Do not try to collect or touch animals and plants**
Please watch the birds quietly from a distance and commit the beauty of flowers to your memory by camera or sketches.
- Smoking is prohibited on the boardwalk.**
Peat is flammable! Please smoke only in the designated place.

Horonobe Visitor Center



Viviparous lizard



Find out how deep *Yachimanako* are!



● Observation deck

500 m
one way

About 1 km
per lap

540 m
one way

● Yachimanako
observation deck

Naganuma
Marshes



Naganuma Marshes



Yellow wagtail



Siberian rubythroat



Stonechat

Naganuma is an oxbow lake, which is the remnant of a river which used to flow there. Many aquatic plants such as watershields and cow lily can be observed there.

Pankenuma Swamp Picnic Site

The largest brackish marsh in the Sarobetsu Plain with a circumference of 8 km. It is red and muddy due to the iron contained in the peat. The view of the sunset and Mt. Rishiri from the observation deck is superb.



10-minute drive from Horonobe Visitor Center (See the back side)
An observation deck, boardwalks, parking space and a restroom are available.

