

Daisetsuzan National Park

At 226,000ha, Daisetsuzan is the largest national park in Japan. The park covers a region extending about 60km north-south, and has a maximum width of 50km east-west. The headwaters of the two most prominent rivers in Hokkaido—the Ishikari River and the Tokachi River—are located in the park, and magnificent mountainous scenery extends across the entire area. Mount Asahi—the highest mountain in Hokkaido—and its surrounding mountains are in the northern part of the park. It is the area with the highest number of visitors, and is easily accessible from Asahikawa City. To the south of Mount Asahi, there is an expansive plateau, and beyond that, Mount Tomuraushi (2,141m) and the Tokachi Mountain Range extend to the south-west. Mount Tokachi (2,077m)—the highest peak in the Tokachi Mountain Range—is an active volcano. The park’s south-eastern section is an area that includes Lake Shikaribetsu, forests, and Lake Nukabira. The Ishikari Mountain Range is located roughly at the center of the park. Throughout the entire park, rich forests cover mountain bases, and hot springs bubble up at various locations.

Tokachi Mountain Range Area

Magnificent views from the nearby villages of Biei and Kamifurano

The Tokachi Mountain Range is a volcanic group with Mount Tokachi, an active volcano, as the central peak. Its elevation approaches 2,000m, and it runs from the northeast to the southwest. It is situated to the south of the Omote Daisetsu Area. Unlike Omote Daisetsu, the Tokachi Mountain Range is an extended ridge consisting of several steep peaks, and the passes between them, with deep canyons extending downward on either side. At lower elevations, the skirts of these mountains extend outward more gently as far as the Biei and Kamifurano districts. The view of this chain of mountains from these districts, rising above farmlands and forests, is simply breathtaking.



The view of Mount Tokachi from a distance

Legend

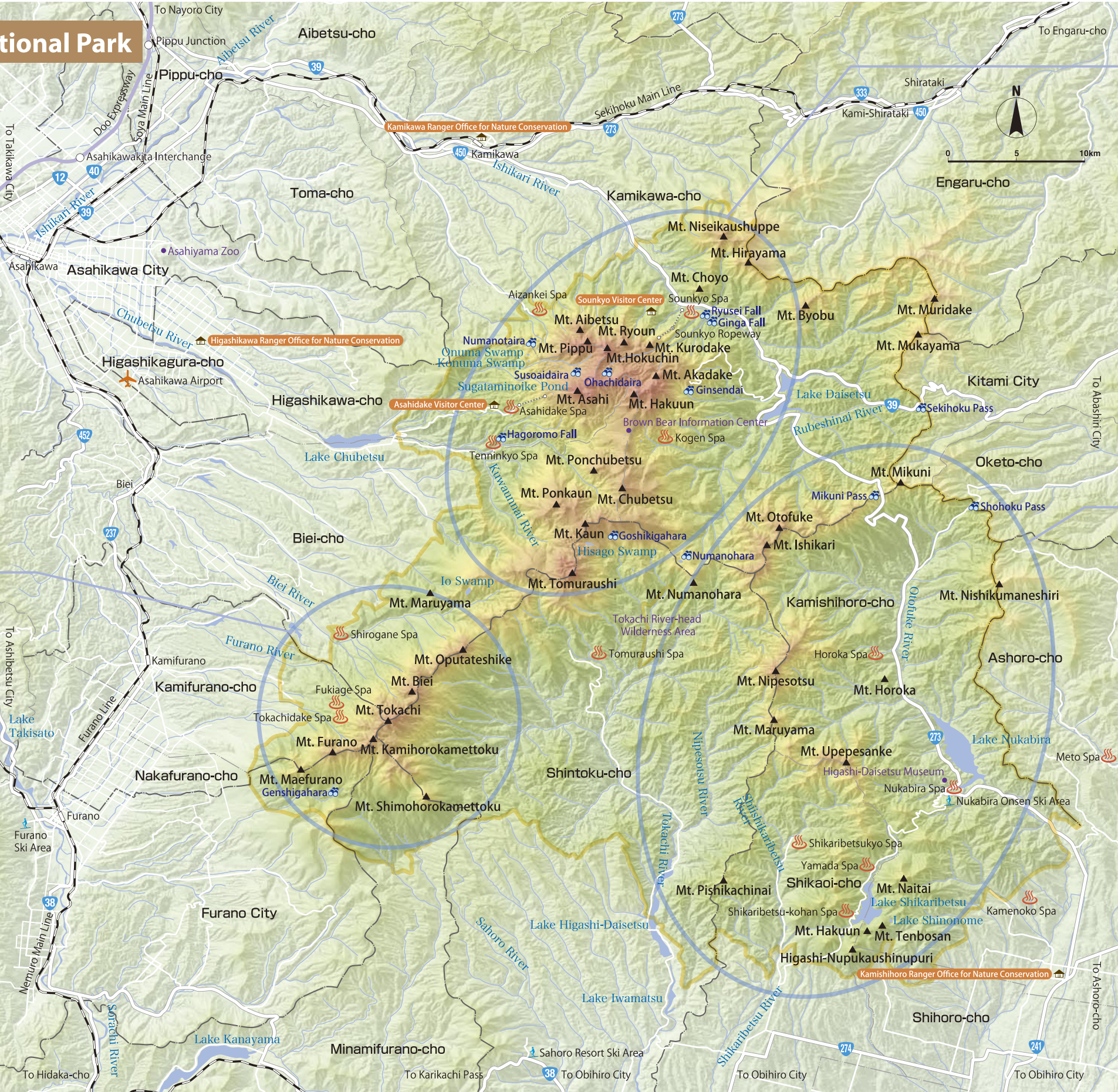
National Park

Spa

Visitor Center / Office for Nature Conservation

View Point

Interchange



Omote Daisetsu Area

Large Mountains and Valleys

The Omote Daisetsu Area is the core area of the Daisetsuzan National Park. It consists of the Daisetsuzan volcanic group and a grand plateau extending to its south. Daisetsuzan volcanic group—commonly referred to simply as “Daisetsuzan”—includes dominant peak of Mount Asahi and other mountains. There are deep valleys at the bases of the mountains to the east and west. Standing in the south of the Omote Daisetsu Area, Mount Tomuraushi is outstanding for its gentle, undulating slopes, and garden-like beauty.



From Tomanokkoshi to Mount Asahi

The Higashi Daisetsu Area

Serene Lakes in the Middle of Deep Forests

The Higashi Daisetsu Area is a highly mountainous zone with unique charms. It includes the Higashi Daisetsu/Ishikari Mountains, Lake Shikaribetsu and Lake Nukabira which, though man-made, offers a splendid view. Tokachi-Mitsumata is surrounded by forests. Unlike the Omote Daisetsu Area, the Ishikari Mountain Range consists of non-volcanic mountains. The headwaters of the Tokachi River at the eastern base of Mount Tomuraushi have been designated as a Wilderness area.



From Tokachi-Mitsumata to Ishikari Mountain Range

